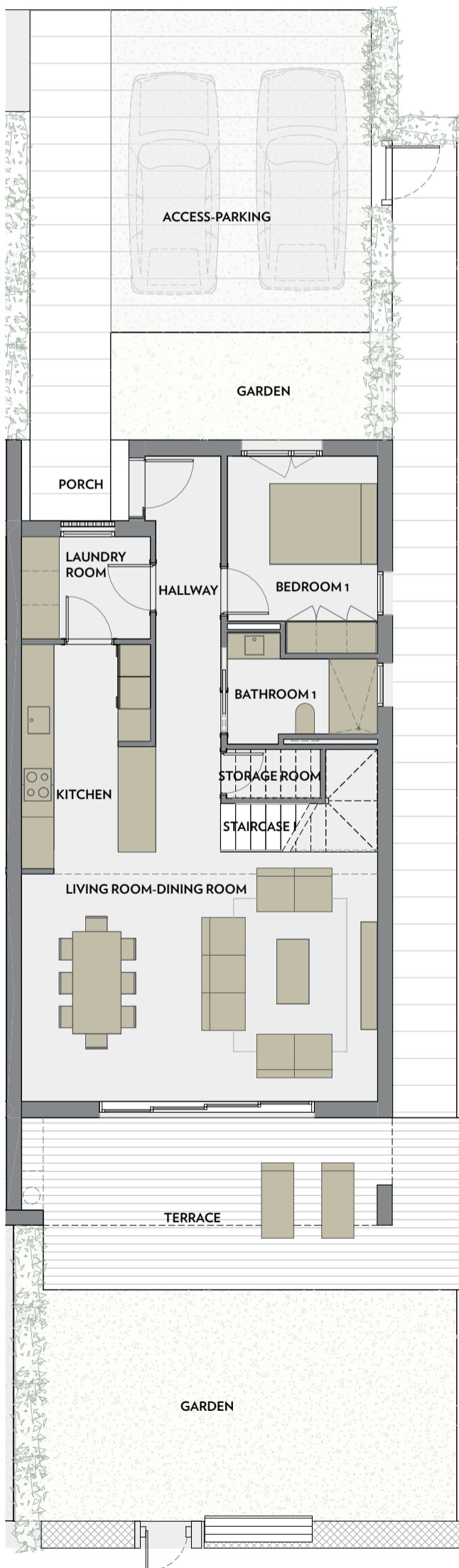




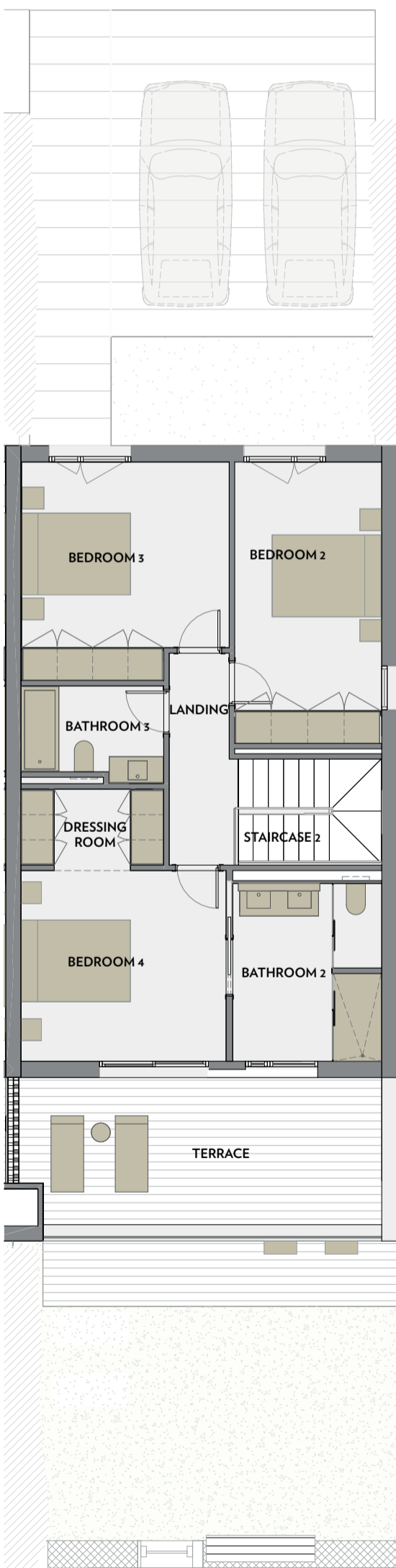
INFINITUM

WELCOME TO EVERYTHING

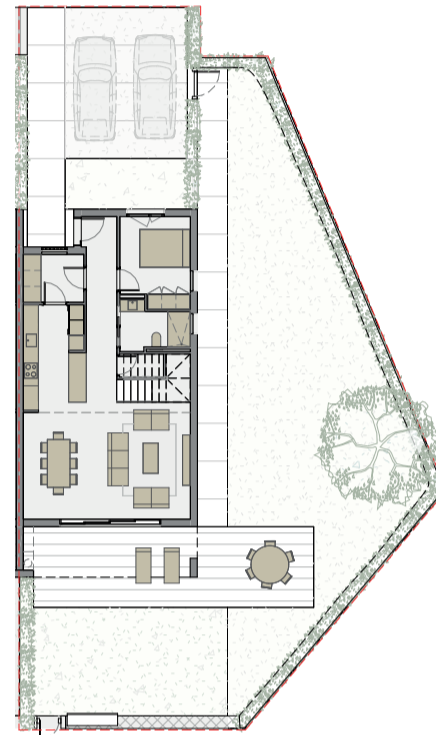
GROUND FLOOR



FIRST FLOOR



GROUND FLOOR - GARDEN

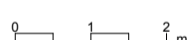


VIA MARIS. Plot II of the tourist and recreational centre of Vila-seca and Salou



MESTRAL

A1 E:1/50
A3 E:1/100



MESTRAL 1

PROPERTY'S SURFACE AREA

LIVING ROOM-DINING ROOM	30,5 m ²
KITCHEN	9,6 m ²
BEDROOM 1	9,6 m ²
BEDROOM 2	13,9 m ²
BEDROOM 3	14,6 m ²
BEDROOM 4	13,2 m ²
BATHROOM 1	4,6 m ²
BATHROOM 2	8,9 m ²
BATHROOM 3	4,3 m ²
LAUNDRY ROOM	4,6 m ²
DRESSING ROOM	3,7 m ²
STORAGE ROOM	1,6 m ²
ENTRANCE HALL	9,1 m ²
LANDING	4,6 m ²
STAIRCASE 1	3,6 m ²
STAIRCASE 2	5,1 m ²

TOTAL USEFUL SURFACE AREA 141,4 m²

TOTAL BUILT SURFACE AREA 167,5 m²

· PAVED TERRACE	76,8 m ²
· GARDEN	171,6 m ²
· ACCESS-PARKING	48,0 m ²

TOTAL USEFUL EXTERIOR SURFACE AREA 296,4 m²

NOTE:
This plan is a guideline and is subject to possible technical modifications or those imposed by the authorised bodies. The total built surface area does not include exterior areas.