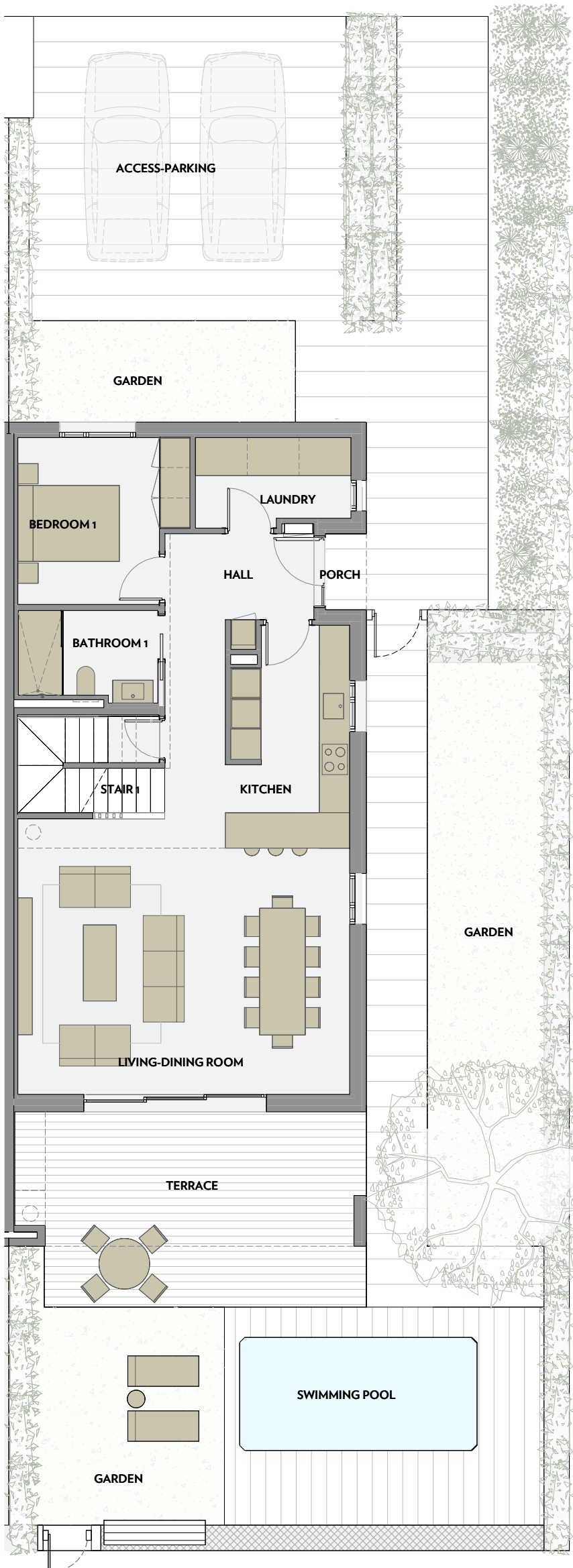




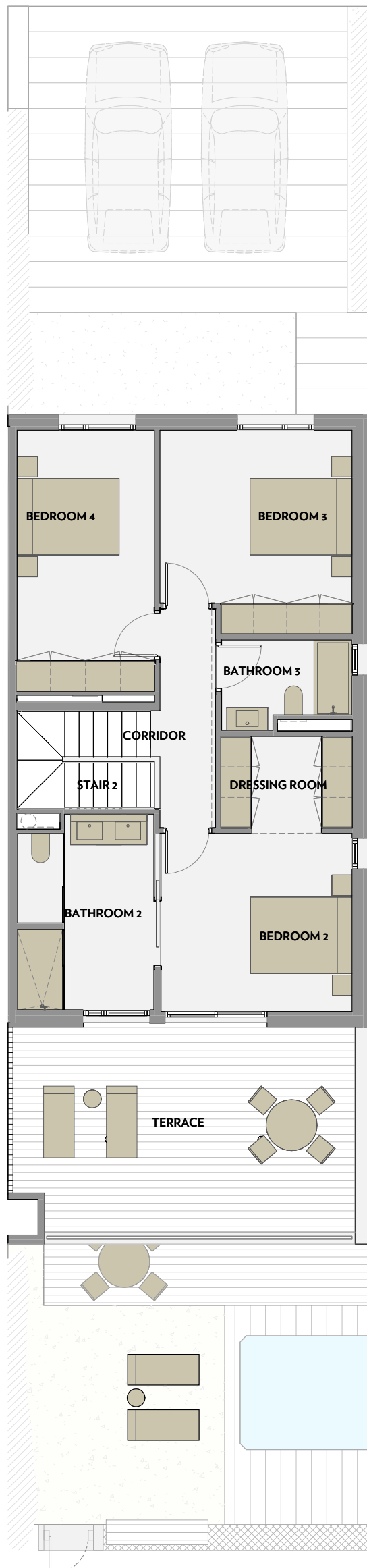
INFINITUM

WELCOME TO EVERYTHING

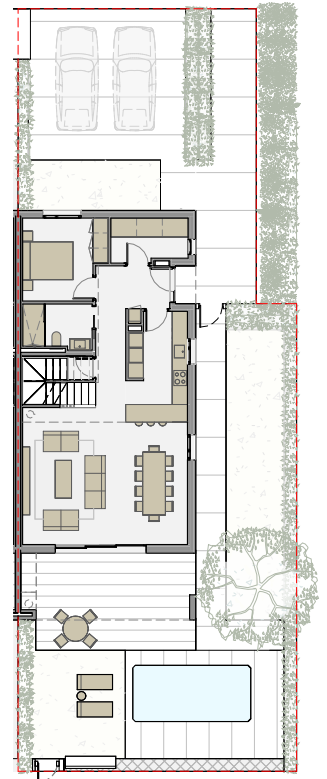
GROUND FLOOR



FIRST FLOOR



GROUND FLOOR - GARDEN



Via Maris. Plot II of the Recreational and Tourist Center of Vila-seca and Salou



PONENT

A1 E:1/50

A3 E:1/100

PONENT - n°1

HOUSE AREA

LIVING-DINING ROOM	35,5 m ²
KITCHEN	10,0 m ²
BEDROOM 1	10,3 m ²
BEDROOM 2	13,2 m ²
BEDROOM 3	14,5 m ²
BEDROOM 4	13,9 m ²
BATHROOM 1	5,1 m ²
BATHROOM 2	10,4 m ²
BATHROOM 3	4,3 m ²
LAUNDRY	4,9 m ²
DRESSING ROOM	4,8 m ²
HALL	10,5 m ²
CORRIDOR	5,0 m ²
STAIR 1	3,5 m ²
STAIR 2	5,0 m ²
STAIR 3	3,5 m ²
MULTIPURPOSE ROOM	73,7 m ²

TOTAL USABLE AREA 228,1 m²

TOTAL BUILT AREA 271,7 m²

·PAVED TERRACE 110,7 m²

·GARDEN 66,7 m²

·ACCESS-PARKING 45,9 m²

·POOL AREA 27,0 m²

TOTAL EXTERIOR USABLE AREA 250,4 m²

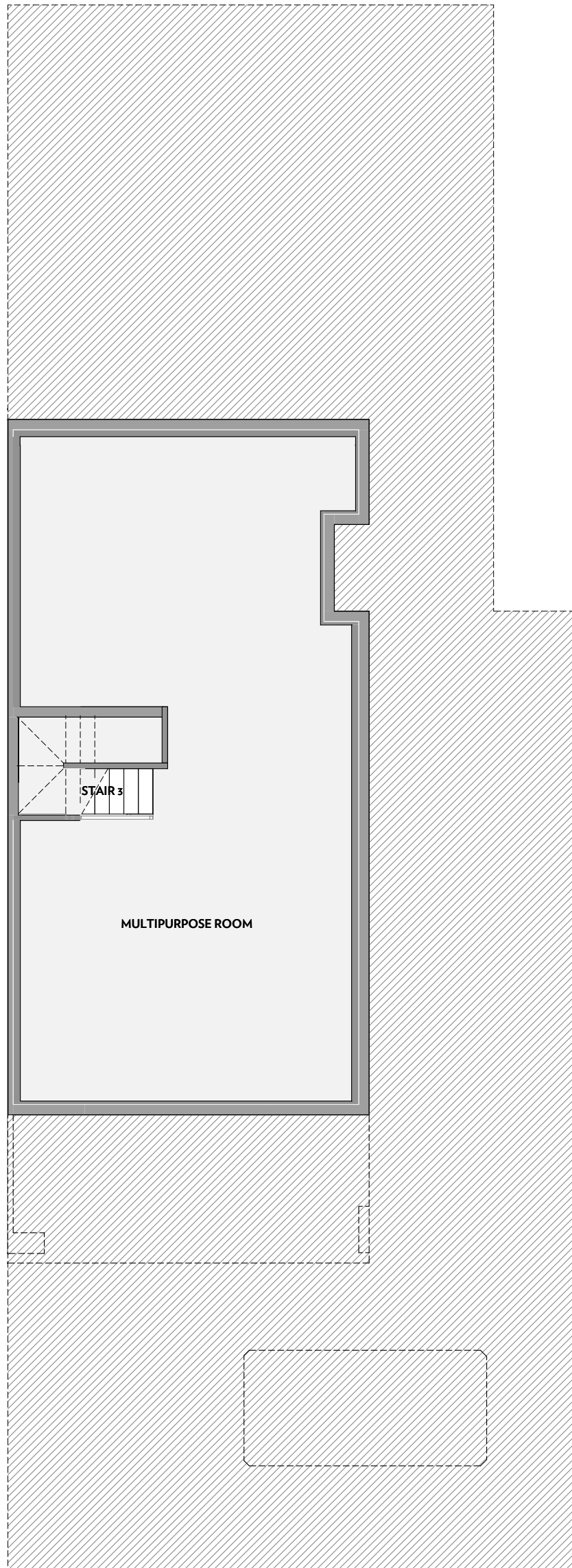
NOTE:
This map is orientative and subject to possible modifications
of a technical nature or imposed by authorized bodies.
The total built area does not include exterior surfaces.



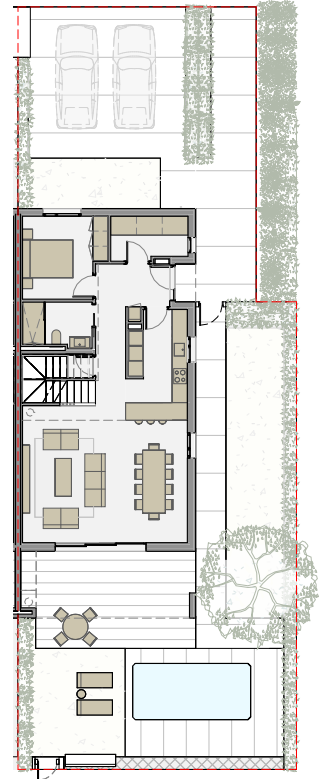
INFINITUM

WELCOME TO EVERYTHING

BASEMENT FLOOR



GROUND FLOOR - GARDEN

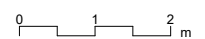


Via Maris. Plot II of the Recreational and Tourist Center of Vila-seca and Salou



PONENT

A1 E:1/50
A3 E:1/100



PONENT - n°1

HOUSE AREA

LIVING-DINING ROOM	35,5 m ²
KITCHEN	10,0 m ²
BEDROOM 1	10,3 m ²
BEDROOM 2	13,2 m ²
BEDROOM 3	14,5 m ²
BEDROOM 4	13,9 m ²
BATHROOM 1	5,1 m ²
BATHROOM 2	10,4 m ²
BATHROOM 3	4,3 m ²
LAUNDRY	4,9 m ²
DRESSING ROOM	4,8 m ²
HALL	10,5 m ²
CORRIDOR	5,0 m ²
STAIR 1	3,5 m ²
STAIR 2	5,0 m ²
STAIR 3	3,5 m ²
MULTIPURPOSE ROOM	73,7 m ²

TOTAL USABLE AREA 228,1 m²

TOTAL BUILT AREA 271,7 m²

·PAVED TERRACE 110,7 m²

·GARDEN 66,7 m²

·ACCESS-PARKING 45,9 m²

·POOL AREA 27,0 m²

TOTAL EXTERIOR USABLE AREA 250,4 m²

NOTE:
This map is orientative and subject to possible modifications of a technical nature or imposed by authorized bodies.
The total built area does not include exterior surfaces.