



# INFINITUM

WELCOME TO EVERYTHING

PONENT VILLAS

Ponent 1

# An exclusive life experience at Infinitum



Discover a unique lifestyle on the seafront of the Costa Dorada, Tarragona. INFINITUM is much more than a home; it is a luxury resort known as the best residential golf resort in Europe and the best Beach Club in Europe. Each element has been designed to offer an exceptional quality of life in a unique, preserved natural setting.



# Semi-detached villas with a private pool, garden and large terraces

Distributed on two floors, these luxury villas offer an elegant, modern design where you can enjoy privacy and disconnect with the sea breeze and scent of the Mediterranean pine forests.

**Ponent Villa 1** has a **73.9m<sup>2</sup>** multi-purpose room in the basement.



**4 double bedrooms**  
and **3 bathrooms**.



**Large terrace** with  
views of nature.  
**Private garden**.



**2 exclusive**  
**parking spaces**.



**Private pool**.



**Multi-purpose room**  
(basement).

## Quality in every detail

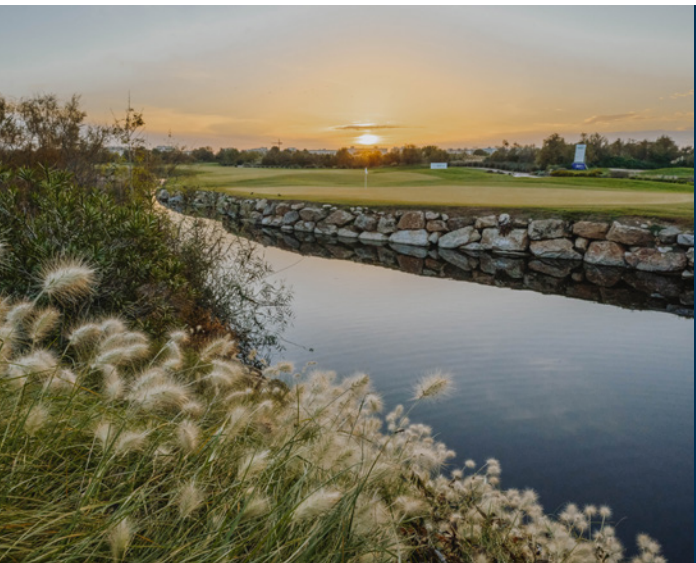
- Santos kitchen with state-of-the-art appliances.
- Porcelanosa bathroom fixtures and fittings with Premium finishes.
- Advanced home automation system for complete control.
- Aerothermal system and underfloor heating for efficient temperature control.
- Electric car charger in the parking space.

Imagine waking up every day with the serenity of the Mediterranean, in an oasis of peace and exclusivity, ideal for those seeking the perfect balance between comfort, luxury and connection with nature.



# Your new home in an oasis of serenity and nature

This project combines architecture and engineering at the service of the environment to create sustainable homes that are integrated in nature. For this reason, it has the most prestigious certificates in sustainable construction.



## Quality and Sustainability Seals

The commitment to sustainability is a priority of this development, endorsed by the most prestigious certificates in sustainable construction:



## Exclusive Services of the Infinitum Resort

A wide range of exclusive services that raise residents' experience, providing comfort, security and high standing.



**Security:** surveillance 24/7 and high quality maintenance.



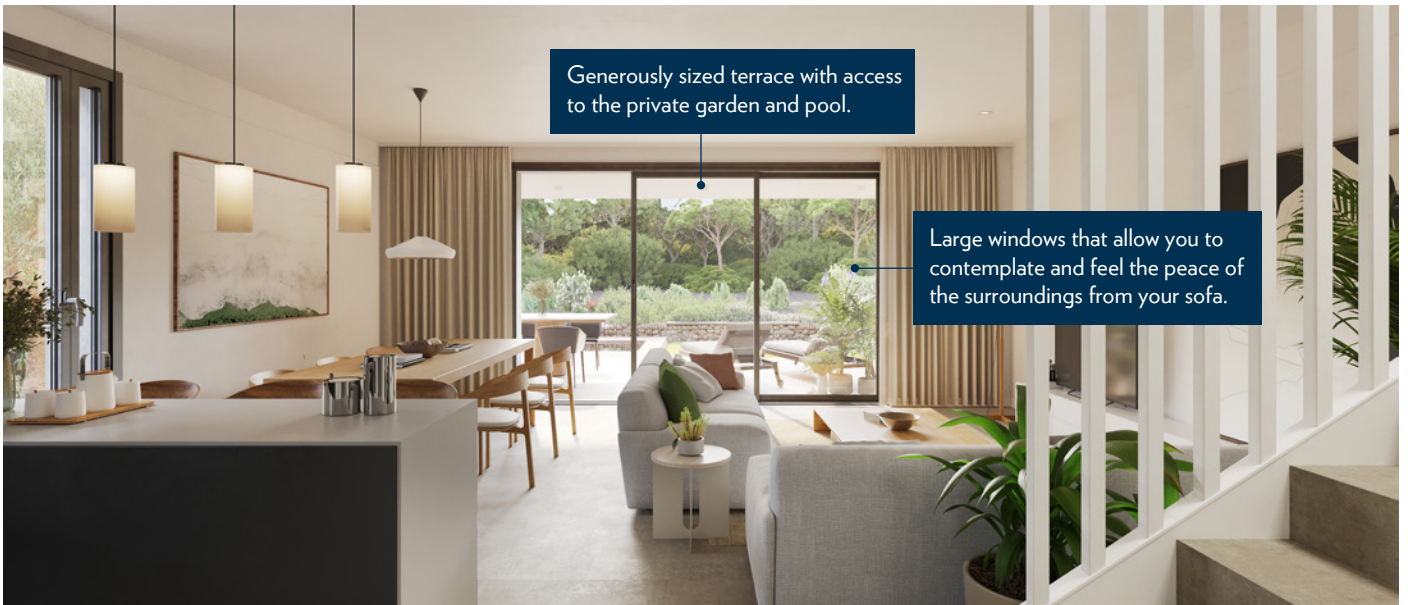
**Personalised care:** resident services, with bookings and management of activities.



**Unique benefits:** resident's card with exclusive discounts in the resort.



**First-class facilities:** access to three world class golf courses, an award winning Beach Club, haute cuisine and 11km of private roads.



Generously sized terrace with access to the private garden and pool.

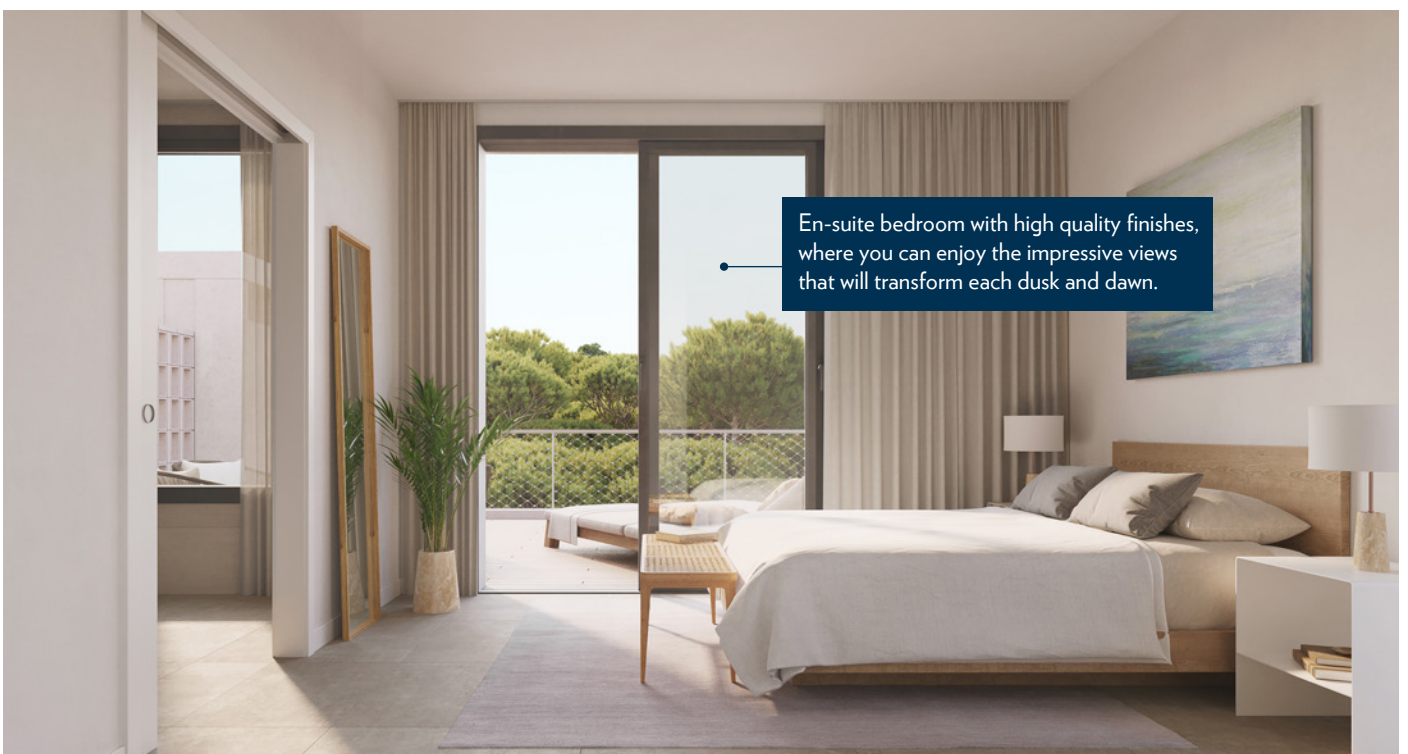
Large windows that allow you to contemplate and feel the peace of the surroundings from your sofa.



Comfort and privacy from the entrance area, with two exclusive parking spaces.

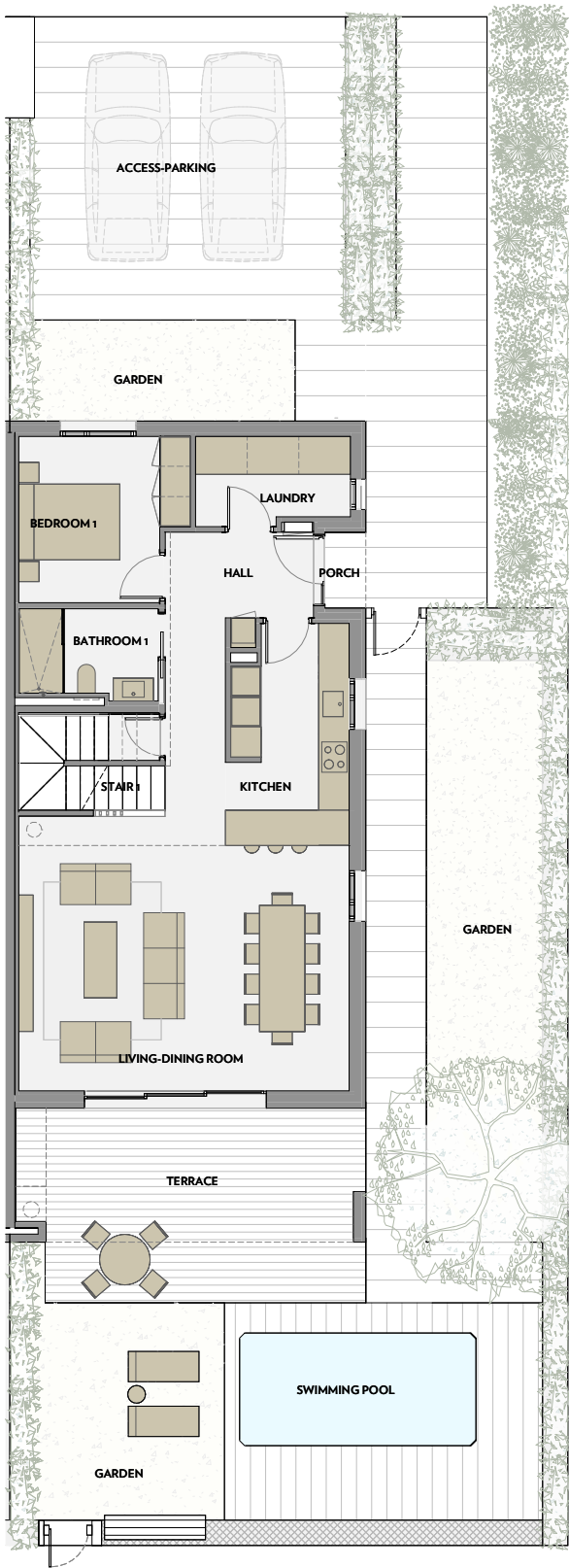


Large rooms with sustainable materials in mediterranean shades, full of natural light.

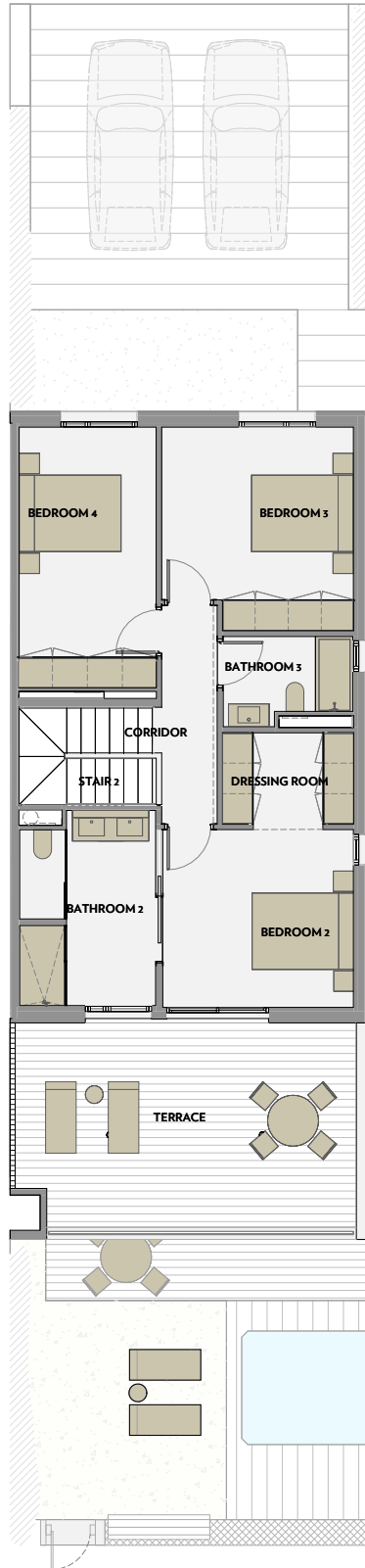


En-suite bedroom with high quality finishes, where you can enjoy the impressive views that will transform each dusk and dawn.

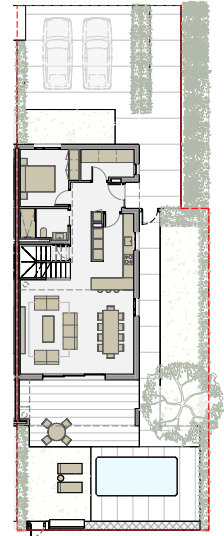
GROUND FLOOR



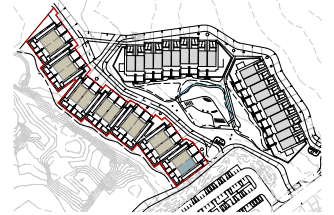
FIRST FLOOR



GROUND FLOOR - GARDEN



Via Maris. Plot II of the Recreational and Tourist Center of Vila-seca and Salou



PONENT

A1 E:1/50  
A3 E:1/100



PONENT - n°1

HOUSE AREA

LIVING-DINING ROOM	35,5 m²
KITCHEN	10,0 m²
BEDROOM 1	10,3 m²
BEDROOM 2	13,2 m²
BEDROOM 3	14,5 m²
BEDROOM 4	13,9 m²
BATHROOM 1	5,1 m²
BATHROOM 2	10,4 m²
BATHROOM 3	4,3 m²
LAUNDRY	4,9 m²
DRESSING ROOM	4,8 m²
HALL	10,5 m²
CORRIDOR	5,0 m²
STAIR 1	3,5 m²
STAIR 2	5,0 m²
STAIR 3	3,5 m²
MULTIPURPOSE ROOM	73,7 m²

TOTAL USABLE AREA 228,1 m²

TOTAL BUILT AREA 271,7 m²

PAVED TERRACE 110,7 m²

GARDEN 66,7 m²

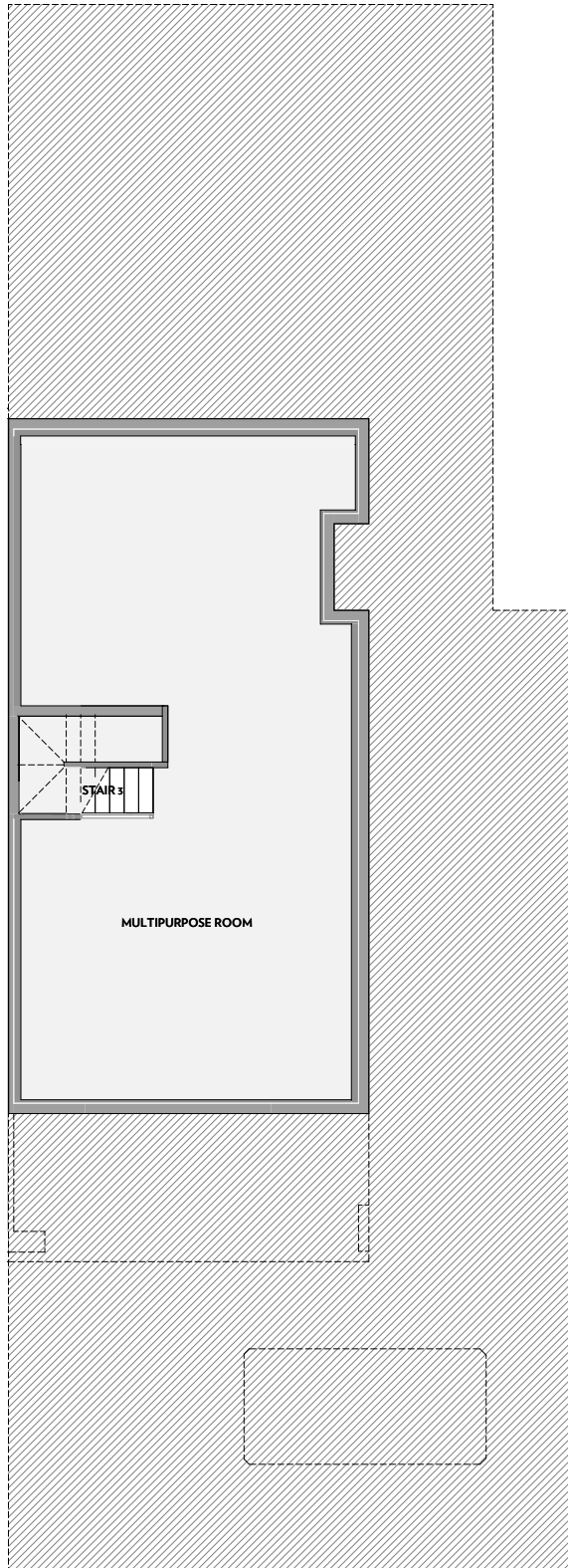
ACCESS-PARKING 45,9 m²

POOL AREA 27,0 m²

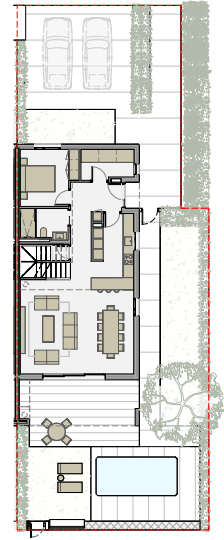
TOTAL EXTERIOR USABLE AREA 260,4 m²

NOTE:  
This map is orientative and subject to possible modifications  
of a technical nature or imposed by authorized bodies.  
The total built area does not include exterior surfaces.

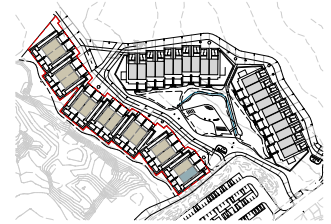
## BASEMENT FLOOR



## GROUND FLOOR - GARDEN



Via Maris. Plot II of the Recreational and Tourist Center of Vila-seca and Salou



## PONENT

A1 E:1/50  
A3 E:1/100

0 1 2 m



## PONENT - m<sup>2</sup>

### HOUSE AREA

LIVING-DINING ROOM	35,5 m <sup>2</sup>
KITCHEN	10,0 m <sup>2</sup>
BEDROOM 1	10,3 m <sup>2</sup>
BEDROOM 2	13,2 m <sup>2</sup>
BEDROOM 3	14,5 m <sup>2</sup>
BEDROOM 4	13,9 m <sup>2</sup>
BATHROOM 1	5,1 m <sup>2</sup>
BATHROOM 2	10,4 m <sup>2</sup>
BATHROOM 3	4,3 m <sup>2</sup>
LAUNDRY	4,9 m <sup>2</sup>
DRESSING ROOM	4,8 m <sup>2</sup>
HALL	10,5 m <sup>2</sup>
CORRIDOR	5,0 m <sup>2</sup>
STAIR 1	3,5 m <sup>2</sup>
STAIR 2	5,0 m <sup>2</sup>
STAIR 3	3,5 m <sup>2</sup>
MULTIPURPOSE ROOM	73,7 m <sup>2</sup>

TOTAL USABLE AREA 228,1 m<sup>2</sup>

TOTAL BUILT AREA 271,7 m<sup>2</sup>

PAVED TERRACE 110,7 m<sup>2</sup>

GARDEN 66,7 m<sup>2</sup>

ACCESS-PARKING 45,9 m<sup>2</sup>

POOL AREA 27,0 m<sup>2</sup>

TOTAL EXTERIOR USABLE AREA 250,4 m<sup>2</sup>

NOTE  
This map is orientative and subject to possible modifications of a technical nature or imposed by authorized bodies. The total built area does not include exterior surfaces.

For more information and visits:  
+34 977 129 070  
residential@infinitumliving.com  
infinitumliving.com