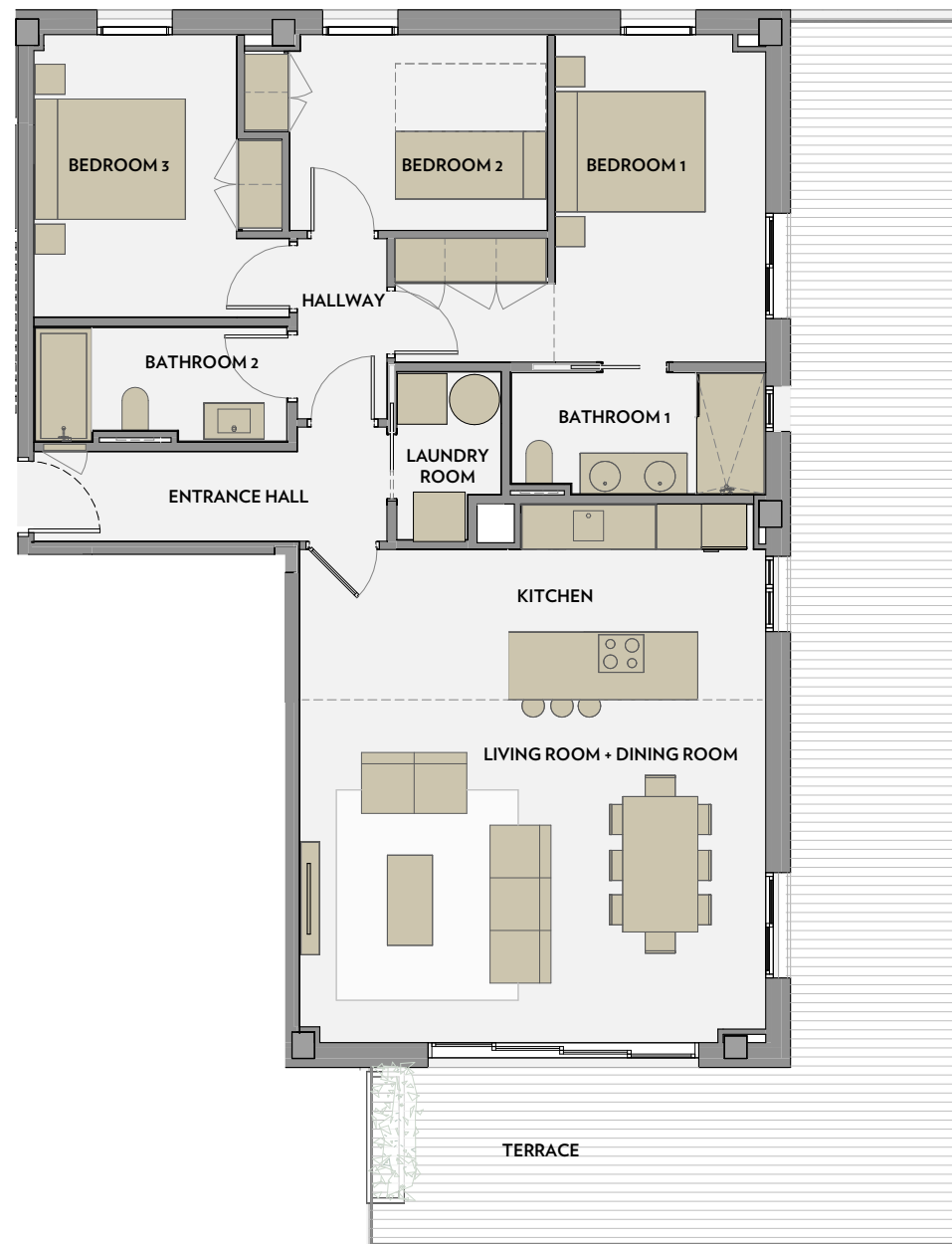




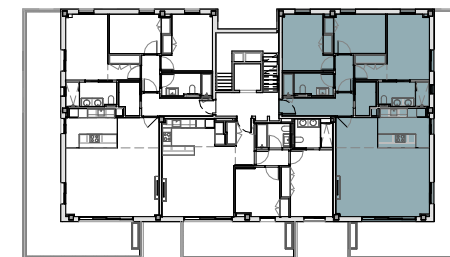
INFINITUM

WELCOME TO EVERYTHING



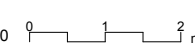
VIA MARIS. PLOT II OF THE RECREATIONAL AND TOURIST CENTRE OF VILA-SECA AND SALOU

SECOND FLOOR



LLEVANT A

A1 E: 1/50
A3 E: 1/100



LLEVANT A. BLOCK 4 - SECOND FLOOR 3ª

SURFACE AREA OF DWELLING

LIVING ROOM + DINING ROOM	28,2 m ²
KITCHEN	13,9 m ²
BEDROOM 1	15,6 m ²
BEDROOM 2	9,6 m ²
BEDROOM 3	11,5 m ²
BATHROOM 1	5,3 m ²
BATHROOM 2	4,9 m ²
LAUNDRY ROOM	2,8 m ²
ENTRANCE HALL	6,0 m ²
HALLWAY	2,8 m ²

TOTAL USEFUL SURFACE AREA 100,6 m²

TOTAL BUILT SURFACE AREA 119,2 m²

TOTAL BLT. S.A. WITH COM. AREA 129,6 m²

TOTAL USEFUL EXTERIOR S.A. 55 m²

NOTE:
This plan is indicative and is subject to possible changes of a technical nature or imposed by the authorised bodies.
The total constructed surface area does not include exterior surface areas.