

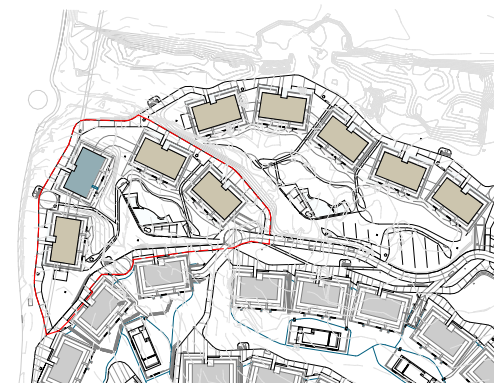
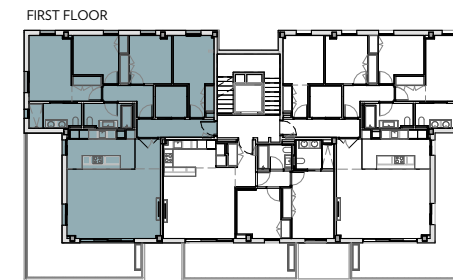


# INFINITUM

WELCOME TO EVERYTHING

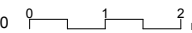


## VIA MARIS. PLOT II OF THE RECREATIONAL AND TOURIST CENTRE OF VILA-SECA AND SALOU



### LLEVANT B

A1 E: 1/50  
A3 E: 1/100



### LLEVANT B. BLOCK 3 - FIRST FLOOR 1º

#### SURFACE AREA OF DWELLING

LIVING ROOM + DINING ROOM	28,2 m <sup>2</sup>
KITCHEN	14,6 m <sup>2</sup>
BEDROOM 1	15,3 m <sup>2</sup>
BEDROOM 2	9,3 m <sup>2</sup>
BEDROOM 3	10,1 m <sup>2</sup>
BEDROOM 4	12,1 m <sup>2</sup>
BATHROOM 1	5,5 m <sup>2</sup>
BATHROOM 2	5,0 m <sup>2</sup>
LAUNDRY ROOM	4,4 m <sup>2</sup>
ENTRANCE HALL	6,1 m <sup>2</sup>
HALLWAY	4,7 m <sup>2</sup>

TOTAL USEFUL SURFACE AREA 115,3 m<sup>2</sup>

TOTAL BUILT SURFACE AREA 136,1 m<sup>2</sup>

TOTAL BLT. S.A. WITH COM. AREA 148,0 m<sup>2</sup>

TOTAL USEFUL EXTERIOR S.A. 38 m<sup>2</sup>

NOTE:  
This plan is indicative and is subject to possible changes of a technical nature or imposed by the authorised bodies.  
The total constructed surface area does not include exterior surface areas.