

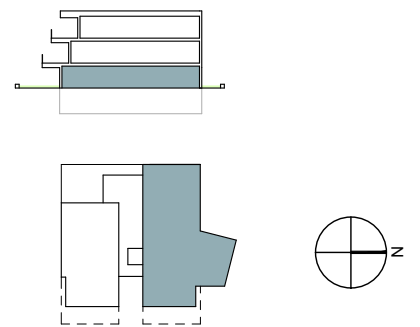


# INFINITUM

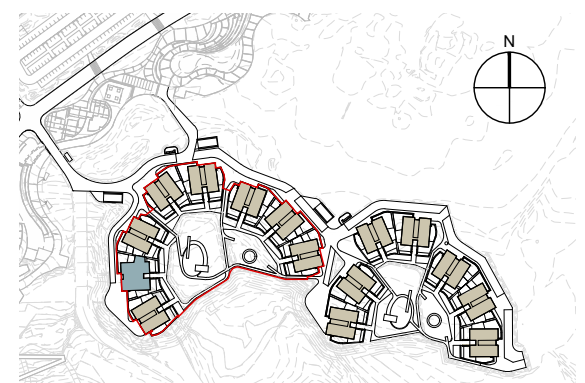
WELCOME TO EVERYTHING



## VIA MARIS PHASE III OF THE RECREATIONAL AND TOURIST CENTRE OF VILA-SECA AND SALOU

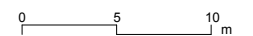


GROUND FLOOR



### MORELLA

A1 E: 1/200  
A3 E: 1/400



#### MORELLA A. BLOCK 2 - GROUND FLOOR 2<sup>a</sup>

##### SURFACE AREA OF DWELLING

LIVING ROOM + DINING ROOM + KITCHEN	51,47 m <sup>2</sup>
ENTRANCE HALL	6,18 m <sup>2</sup>
HALLWAY	4,25 m <sup>2</sup>
LAUNDRY ROOM	3,80 m <sup>2</sup>
BEDROOM 1	18,37 m <sup>2</sup>
BEDROOM 2	11,44 m <sup>2</sup>
BEDROOM 3	11,55 m <sup>2</sup>
BEDROOM 4	12,55 m <sup>2</sup>
WALK-IN WARDROBE	3,40 m <sup>2</sup>
BATHROOM 1	5,15 m <sup>2</sup>
BATHROOM 2	4,32 m <sup>2</sup>
BATHROOM 3	8,00 m <sup>2</sup>
<b>TOTAL USEFUL SURFACE AREA</b>	<b>140,48 m<sup>2</sup></b>
<b>TOTAL BUILT SURFACE AREA</b>	<b>166,34 m<sup>2</sup></b>
<b>TOTAL BLT. S.A. WITH COM. AREA</b>	<b>242,30 m<sup>2</sup></b>
PAVED TERRACE	62,14 m <sup>2</sup>
TERRACE WITHOUT GARDEN	64,97 m <sup>2</sup>
LANDSCAPED TERRACE	23,31 m <sup>2</sup>
<b>TOTAL USEFUL EXTERIOR S.A.</b>	<b>150,42 m<sup>2</sup></b>

**NOTE:**  
This plan is indicative and is subject to possible changes of a technical nature or imposed by the authorised bodies. The total constructed surface area does not include exterior surface areas.